

SEE PAGE 47

PART OF S.E. 1/4 SEC. 16, T.5N., R.1W., S.L.B. & M.
EMERALD HILLS CONDOMINIUM
PHASE NO. 5

IN SOUTH OGDEN CITY
SCALE 1" = 80'

TAXING UNIT: 27

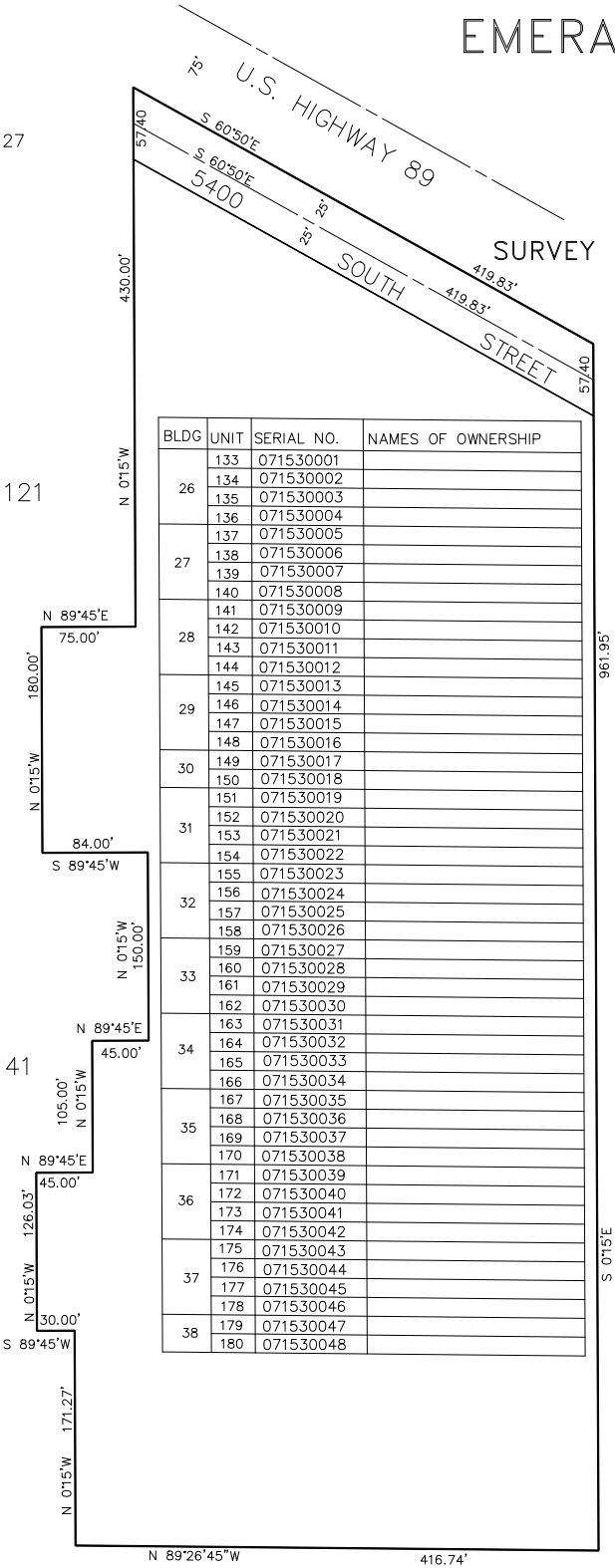
SURVEY PLAT: BOOK 17 OF DEDICATION PLATS, PAGES 49-52

SEE PAGE 121

SEE PAGE 251

SEE PAGE 141

SEE PAGE 252



BLDG	UNIT	SERIAL NO.	NAMES OF OWNERSHIP
26	133	071530001	
	134	071530002	
	135	071530003	
	136	071530004	
27	137	071530005	
	138	071530006	
	139	071530007	
	140	071530008	
28	141	071530009	
	142	071530010	
	143	071530011	
	144	071530012	
29	145	071530013	
	146	071530014	
	147	071530015	
	148	071530016	
30	149	071530017	
	150	071530018	
	151	071530019	
	152	071530020	
31	153	071530021	
	154	071530022	
	155	071530023	
	156	071530024	
32	157	071530025	
	158	071530026	
	159	071530027	
	160	071530028	
33	161	071530029	
	162	071530030	
	163	071530031	
	164	071530032	
34	165	071530033	
	166	071530034	
	167	071530035	
	168	071530036	
35	169	071530037	
	170	071530038	
	171	071530039	
	172	071530040	
36	173	071530041	
	174	071530042	
	175	071530043	
	176	071530044	
37	177	071530045	
	178	071530046	
	179	071530047	
	180	071530048	

NOTE:
EACH UNIT IN BUILDING NO.'S 26 TO 29 & 31
INCLUDED 0.057172 PERCENT OF OWNERSHIP
IN THE COMMON AREAS & FACILITIES.
EACH UNIT IN BUILDING NO.'S 30 & 38 INCLUDES
0.057200 PERCENT OF OWNERSHIP IN THE COMMON
AREAS & FACILITIES. SEE BOOK 99B, PAGE 547 OF
RECORDS.